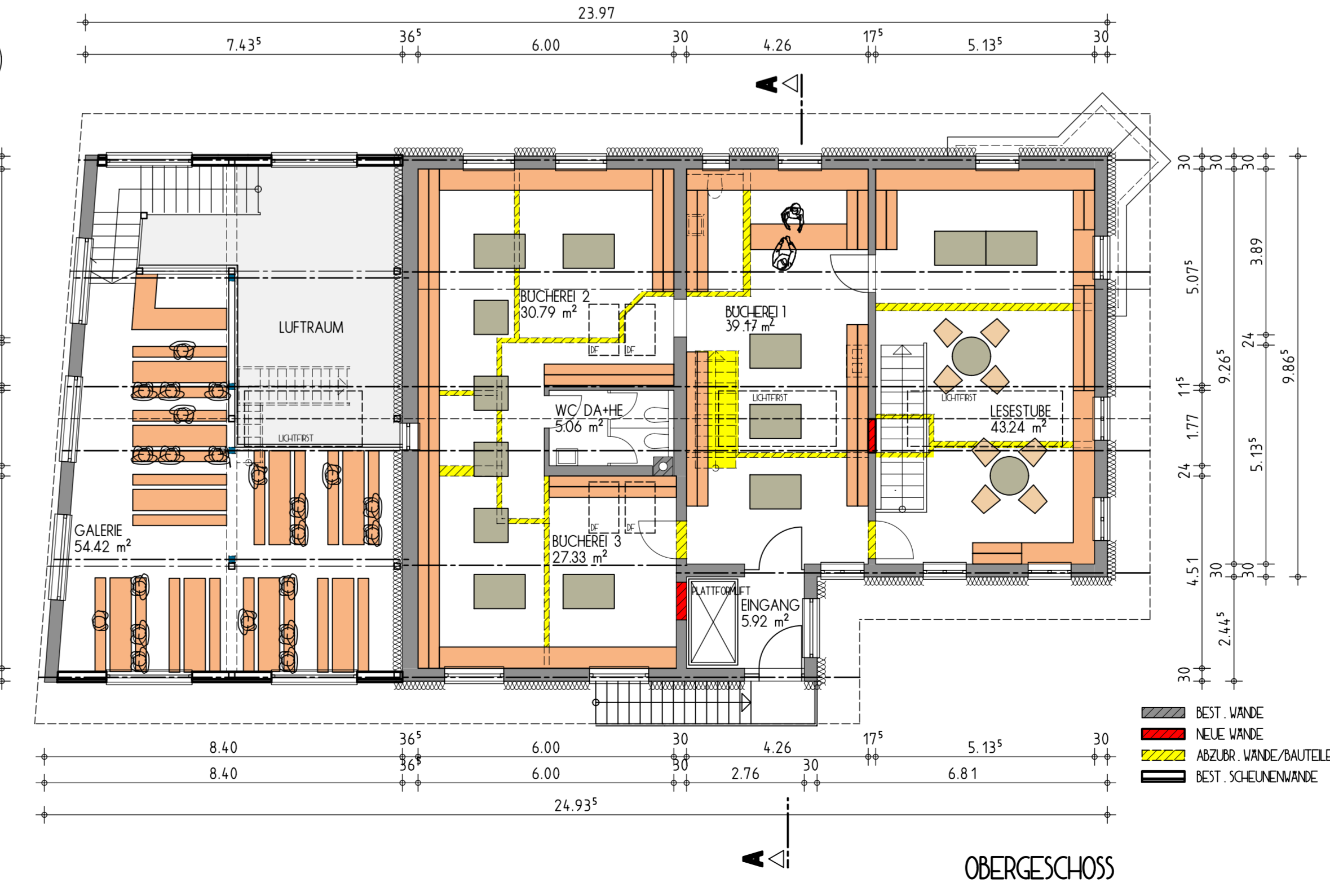
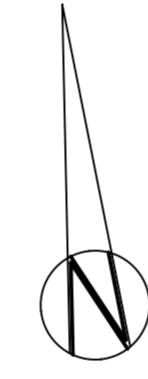
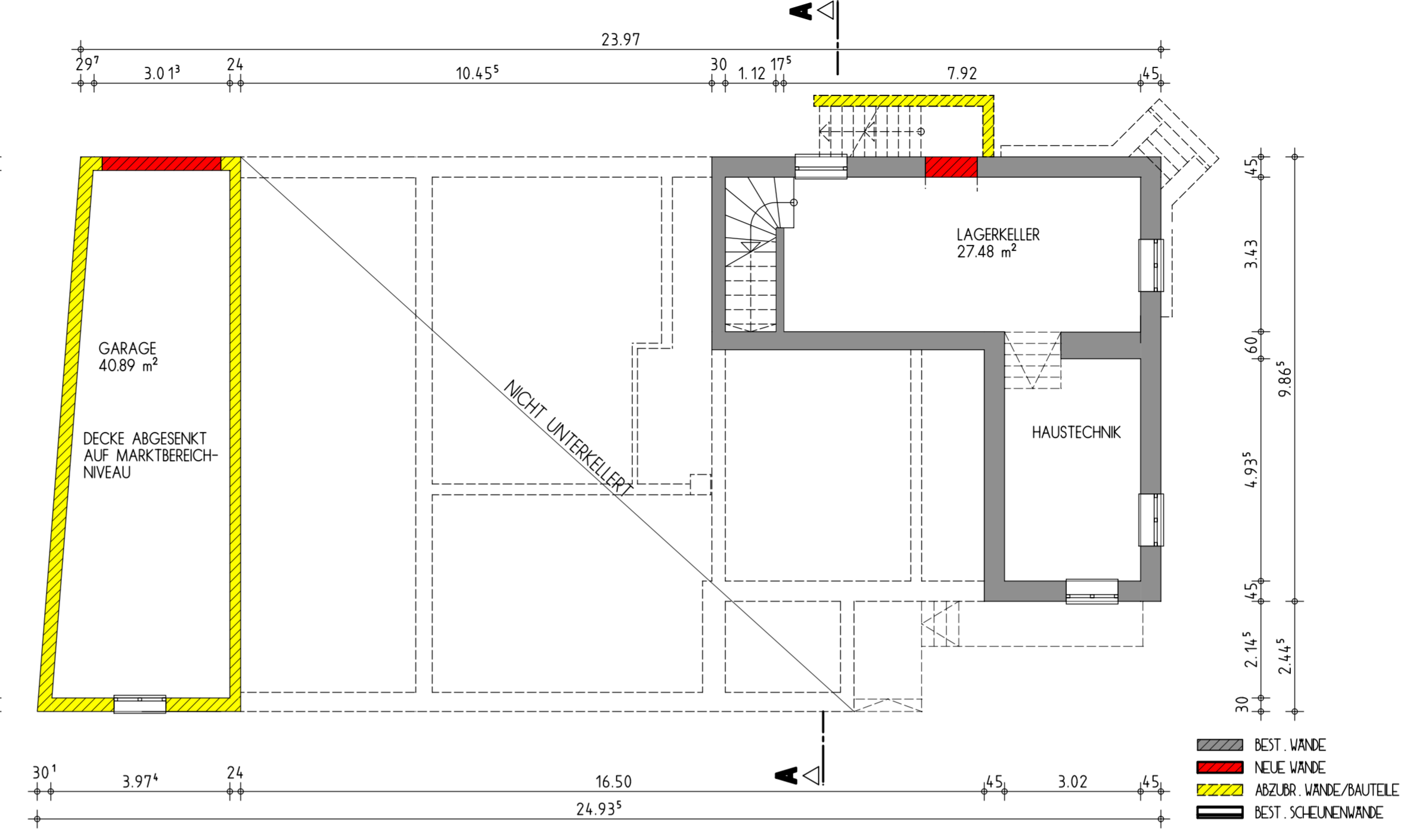
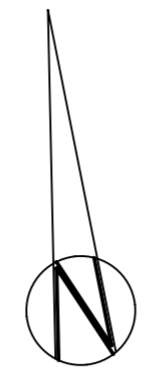
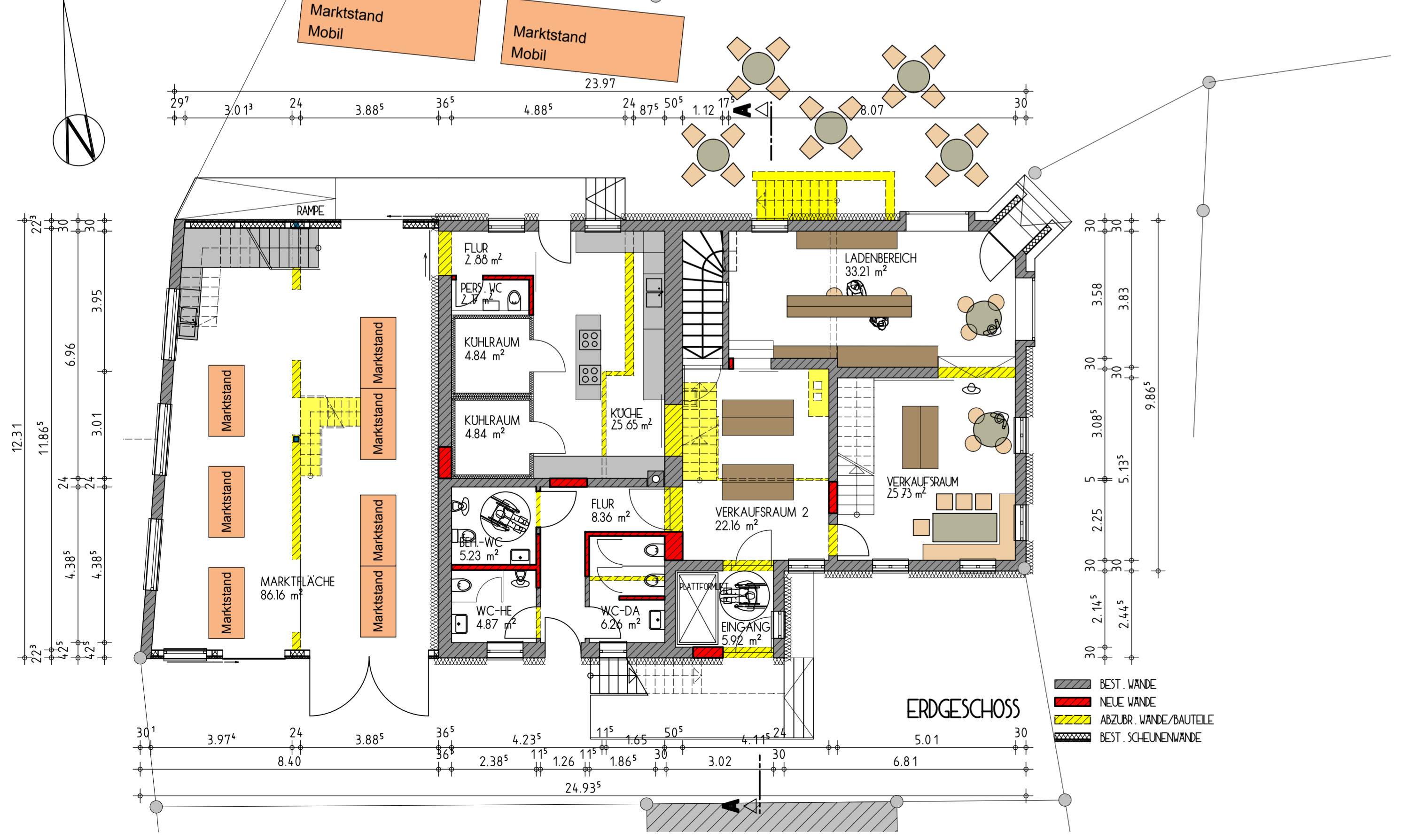
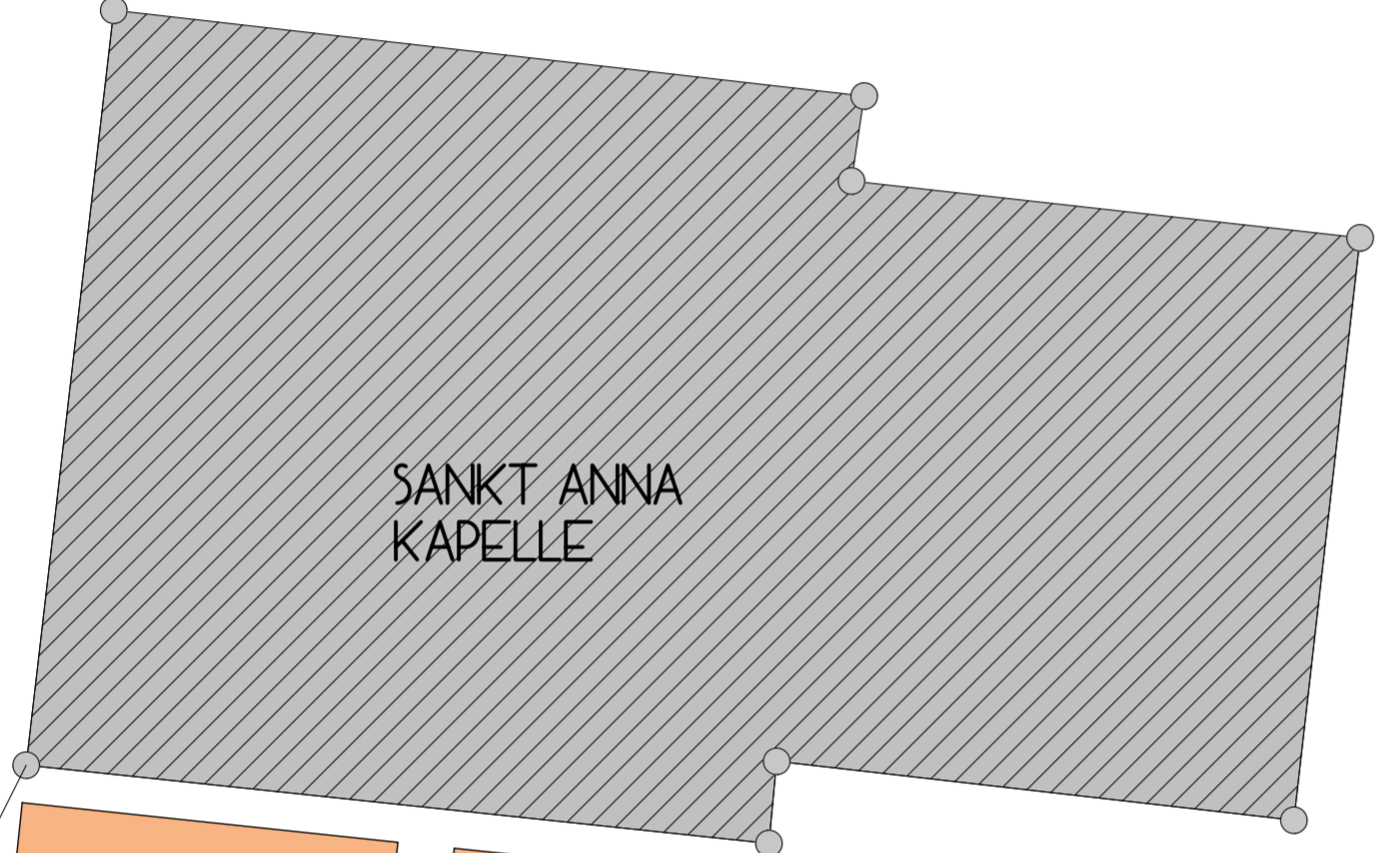
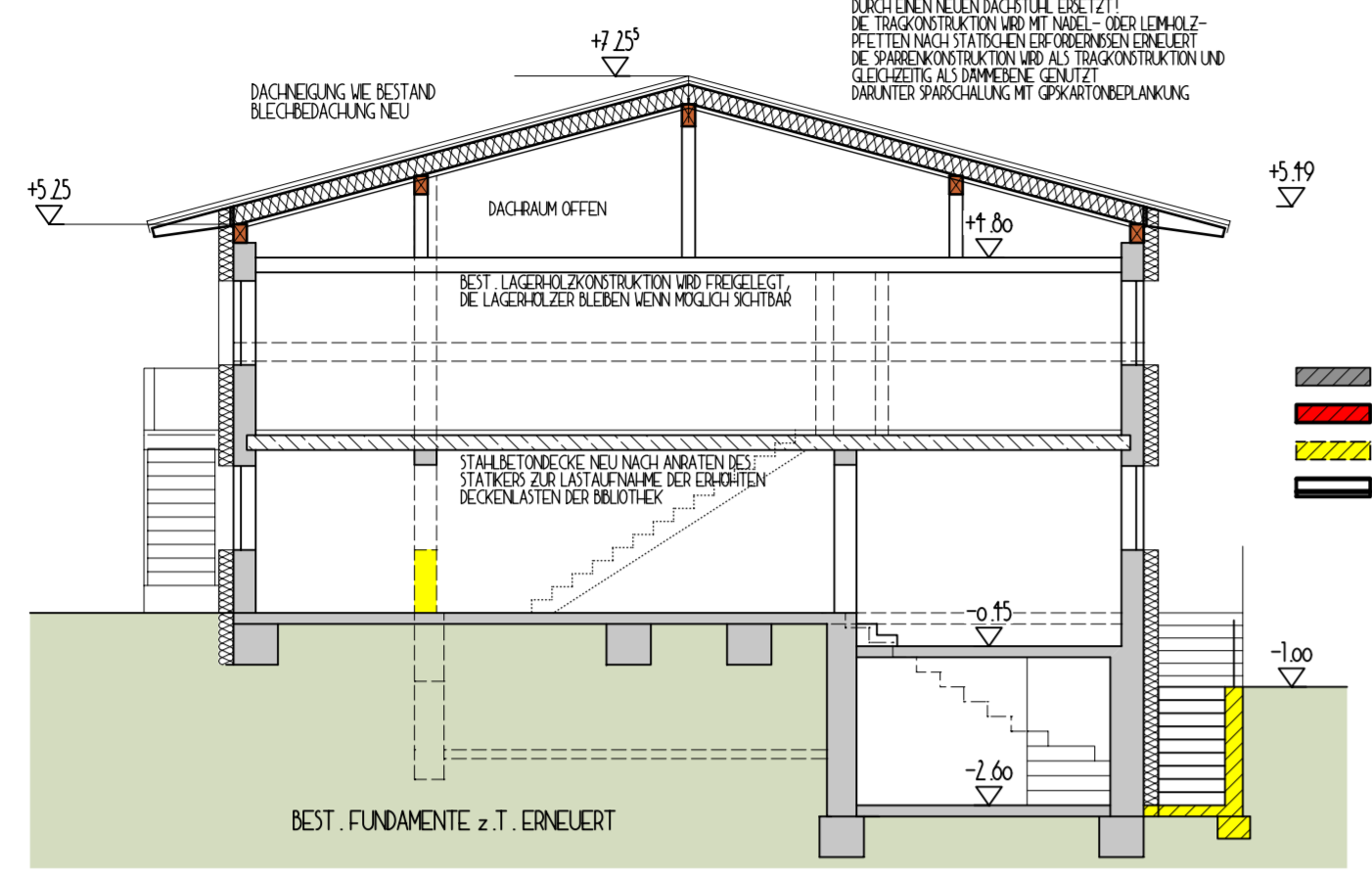


SCHNITT A-A



TEKTURPLANUNG ZUR

NUTZUNGSÄNDERUNG UND SANIERUNG
AM ANWESEN "ERD-HAUS"
MITTELBERGER STRASSE 3, IN OY-MITTELBERG
GEMARKUNG MITTELBERG, FL. NR. 3073

UG, EG, OG, SCHNITT A-A M 1/100

BAUHERR: GEMEINDE OY-MITTELBERG
vert. d. 1. BGM THEO HASLACH
HAUPTSTRASSE 28,
87166 OY-MITTELBERG

NACHBARN: GEMEINDE OY-MITTELBERG, 1. BGM THEO HASLACH FL. ST. 3073

WOLLEND HANS FL. ST. 3077	ALLGAYER-HAFFT GABRIELE FL. ST. 3076/2
FRK WILHELM FL. ST. 3076/2	KATH. PFARRKIRCHENSTIFTUNG VERKLARUNG G-4811 FL. ST. 3074
GEMEINDE OY-MITTELBERG FL. ST. 3070, 3079, 3109	

ENTWURFSVERFASSER
IM OKTOBER 2012

PLANUNGSBURO
GÜNTER KLAUS
SONNENBICHL 20
87466 OY-MITTELBERG
TEL. UND FAX 08366/1635

